

FANCM (268:288) Antibody Data Sheet

HGNC: FA complementation group M

Antibody ID: M3834

Animal: J3590, J3591

Synonyms: "FANCM"

Type: Affinity Purified Rabbit Polyclonal

Antigen: 268:288

Peptide Sequence: GEELAAIQKTYIQILESFARS

Assay: N/A

Confirmed Species Cross-Reactivity: N/A

Supplier: NEP

Project Number: 3834

Individual Animal Serum/Unpurified Serum Available: YES

Storage: This antibody is stored in 50% Glycerol, .05% Azide, and 1% BSA and can be kept at 4°C or -20°C safely.

- Due to the presence of BSA in the buffer, non-BSA based blocking solutions may be helpful in limiting background signal.

Feedback Required:

All users are required to submit use-data. Please refer to the [FARM Antibodies page](#) for instructions on how to submit.

Citing FARM:

All users are required to cite FARM in publications. Please refer to the [FARM Publications page](#) for instructions on how to cite.

Last Updated: December 2024

Donating Investigators:

Aimin Peng (penga@unc.edu) and Odjo Germain Gouttia (ggouttia@unc.edu) at University of North Carolina 12/16/2024

Experimental Set-Up:

Cell Line: **HaCaT**

Control(s):

Treatment:

Protein: **FANC M (268:288)**

Western Blot Conditions:

Samples Loaded: **10µl SDS sample buffer**

SDS Page: **Yes**

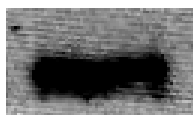
Transfer Condition: **wet transfer**

Detection:

	Primary Antibody: NAME	Secondary Antibody: NAME
Source	FARF	
Concentration	0.227 mg/ml	
Dilution	1:1000	7:1000
Final Concentration	0.227 ug/ml	0.0016 ug/ml
Incubation Temp/Time	Overnight at 4 degrees Celsius	1 hour room temperature

Results:

FANC M



— 250

— 150