

FANCI (241:255) Antibody Data Sheet

HGNC: FA complementation group I

Antibody ID: I1002

Animal: G4270, 4271

Synonyms: “FANCI-1”

Type: Affinity Purified Rabbit Polyclonal

Antigen: 241:255

Peptide Sequence: DKQHNEEQSGDELLD

Assay: N/A

Confirmed Species Cross-Reactivity: N/A

Supplier: N/A

Project Number: 1002

Individual Animal Serum/Unpurified Serum Available: YES

Storage: This antibody is stored in PBS should be kept at 4°C. Avoid freeze/thaws.

Feedback Required:

All users are required to submit use-data. Please refer to the [FARM Antibodies page](#) for instructions on how to submit.

Citing FARM:

All users are required to cite FARM in publications. Please refer to the [FARM Publications page](#) for instructions on how to cite.

Last Updated: December 2024

Donating Investigators:

Aimin Peng (penga@unc.edu) and Odjo Germain Gouttia (ggouttia@unc.edu) at University of North Carolina 12/16/2024

Experimental Set-Up:

Cell Line: **HaCaT**

Control(s):

Treatment:

Protein: **FANC I-1 4270**

Western Blot Conditions:

Samples Loaded: **10µl SDS sample buffer**

SDS Page: **Yes**

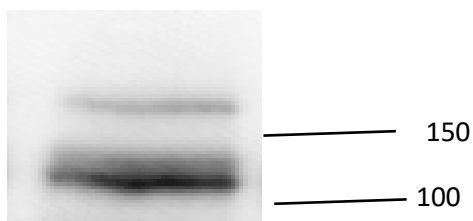
Transfer Condition: **wet transfer**

Detection:

	Primary Antibody: NAME	Secondary Antibody: NAME
Source	FARF	
Concentration	2.8 mg/ml	
Dilution	1:500	6:5000
Final Concentration	5.6 ug/ml	0.0067 ug/ml
Incubation Temp/Time	Overnight at 4 degrees Celsius	1 hour room temperature

Results:

FANC I



Last Updated: December 2024