

## FANCG (604:622) Antibody Data Sheet

**HGNC:** FA complementation group G

**Previous Symbols:** XRCC9

**Antibody ID:** 0415R / G0415

**Animal ID** (use-data, see below): **PA4700** (great), **4700** (good), **4699** (great)

**Synonyms:** “FANCG-2”

**Type:** Affinity Purified Rabbit Polyclonal

**Antigen:** 604:622

**Peptide Sequence:** DRDAFLEEFRTSLPKSCDL

**Assay:** N/A

**Confirmed Species Cross-Reactivity:** N/A

**Supplier:** Open Biosystems

**Project Number:** 0415

**Individual Animal Serum/Unpurified Serum Available:** YES

**Storage:**

- Animal ID **PA4700** is stored in PBS should be kept at 4°C. Avoid freeze/thaws.
- Animal ID **4700** and **4699** are stored in 50% Glycerol, .05% Azide, and 1% BSA and can be kept at 4°C or -20°C safely.
  - Due to the presence of BSA in the buffer, non-BSA based blocking solutions may be helpful in limiting background signal.

**Feedback Required:**

All users are required to submit use-data. Please refer to the [FARM Antibodies page](#) for instructions on how to submit.

**Citing FARM:**

All users are required to cite FARM in publications. Please refer to the [FARM Publications page](#) for instructions on how to cite.

**Last Updated:** August 2021

**Animal ID: PA4700.**Use-data donated by Professor Carreau at Laval University. [madeleine.carreau@fmed.ulaval.ca](mailto:madeleine.carreau@fmed.ulaval.ca)**Experimental Set-Up:**

Cell Line: HEK293T

Control(s): HEK293T transfected with pREP4-FANCG

Treatment: NO

Protein: FANCG

**Western Blot Conditions:**

Samples Loaded: ≈25ug

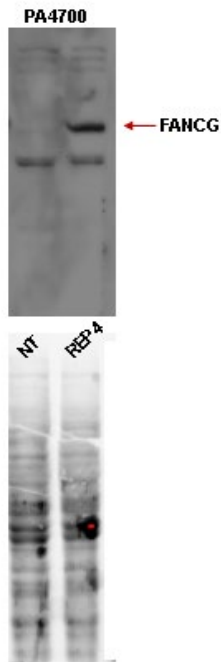
SDS Page: 10%

Transfer Condition: Trans-Blot Turbo Transfer System 25V, 10 min , Biorad

Transfer buffer 1X

Detection: Chemiluminescence

	Primary Antibody: <b>FANCG (604:622)</b> <b>PA4700</b>	Secondary Antibody: <b>AffiniPure Goat Anti-Rabbit</b> <b>IgG (H+L)</b>
Source	Rabbit - FARF	Jackson ImmunoResearch
Concentration	1.42 mg/ml	0,8mg/mL
Dilution	1:1000	1:10000
Final Concentration	0.14ug/ml	0,08ug/mL
Incubation Temp/Time	Over night 4°C	1 hour room temp.

**Results:****Interpretation:**

Antibody recognizes something unspecific at ≈50kDa. Overall, very good specificity, perhaps if FANCG is not being overexpressed is needed a lower dilution.

**Animal ID: 4700**Use-data donated by Professor Carreau at Laval University. [madeleine.carreau@fmed.ulaval.ca](mailto:madeleine.carreau@fmed.ulaval.ca)**Experimental Set-Up:**

Cell Line: HEK293T

Control(s): HEK293T transfected with pREP4-FANCG

Treatment: NO

Protein: FANCG

**Western Blot Conditions:**

Samples Loaded: ≈25ug

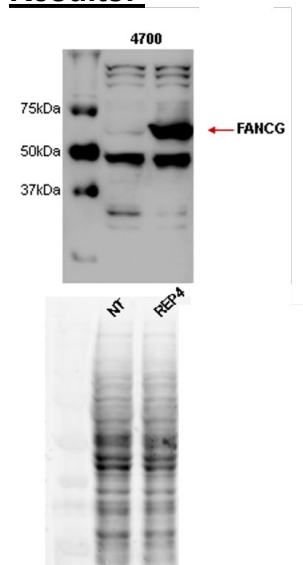
SDS Page: 10%

Transfer Condition: Trans-Blot Turbo Transfer System 25V, 10 min , Biorad

Transfer buffer 1X

Detection: Chemiluminescence

	Primary Antibody: <b>FANCG (604:622)</b> <b>4700</b>	Secondary Antibody: <b>AffiniPure Goat Anti-Rabbit IgG</b> <b>(H+L)</b>
Source	Rabbit - FARF	Jackson ImmunoResearch
Concentration	0.55 mg/ml	0,8mg/mL
Dilution	1:1000	1:10000
Final Concentration	0.05ug/ml	0,08ug/mL
Incubation Temp/Time	Over night 4°C	1 hour room temp.

**Results:****Interpretation:**

Antibody recognizes endogenous FANCG and overexpressed FANCG. However, it recognizes something unspecific at ≈50kDa and between 150kDa and 250kDa, also recognizes the bands of the ladder (Precision Plus Protein All Blue Prestained Protein Standards from Biorad). Perhaps a higher dilution will have less unspecific signal.

**Animal ID: 4699**Use-data donated by Professor Carreau at Laval University. [madeleine.carreau@fmed.ulaval.ca](mailto:madeleine.carreau@fmed.ulaval.ca)**Experimental Set-Up:**

Cell Line: HEK293T

Control(s): HEK293T transfected with pREP4-FANCG

Treatment: NO

Protein: FANCG

**Western Blot Conditions:**

Samples Loaded: ≈25ug

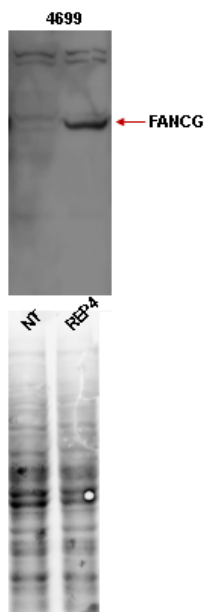
SDS Page: 10%

Transfer Condition: Trans-Blot Turbo Transfer System 25V, 10 min , Biorad

Transfer buffer 1X

Detection: Chemiluminescence

	Primary Antibody: <b>FANCG (604:622)</b> <b>4699</b>	Secondary Antibody: <b>AffiniPure Goat Anti-Rabbit IgG</b> <b>(H+L)</b>
Source	Rabbit - FARF	Jackson ImmunoResearch
Concentration	1.1 mg/ml	0,8mg/mL
Dilution	1:1000	1:10000
Final Concentration	0.11ug/ml	0,08ug/mL
Incubation Temp/Time	Over night 4°C	1 hour room temp.

**Results:****Interpretation:**

Antibody recognizes the overexpressed FANCG. Also, it recognizes something unspecific between 150kDa and 250kDa. Overall, very good specificity, perhaps if FANCG is not being overexpressed is needed a lower dilution.