

## FANCG (14:28) Antibody Data Sheet

**HGNC:** FA complementation group G

**Previous Symbols:** XRCC9

**Antibody ID:** G0706

**Animal:** 9072

**Synonyms:** "FANCG-1"

**Type:** Affinity Purified Rabbit Polyclonal

**Antigen:** 14:28

**Peptide Sequence:** DLWREKNDRLVRQAK

**Assay:** N/A

**Confirmed Species Cross-Reactivity:** N/A

**Supplier:** Open Biosystems

**Project Number:** 0706

**Individual Animal Serum/Unpurified Serum Available:** YES

**Storage:** This antibody is stored in PBS should be kept at 4°C. Avoid freeze/thaws.

**Feedback Required:**

All users are required to submit use-data. Please refer to the [FARM Antibodies page](#) for instructions on how to submit.

**Citing FARM:**

All users are required to cite FARM in publications. Please refer to the [FARM Publications page](#) for instructions on how to cite.

Use-data donated by Professor Carreau at Laval University. [madeleine.carreau@fmed.ulaval.ca](mailto:madeleine.carreau@fmed.ulaval.ca)

### **Experimental Set-Up:**

Cell Line: HEK293T

Control(s): HEK293T transfected with pREP4-FANCG

Treatment: NO

Protein: FANCG

### **Western Blot Conditions:**

Samples Loaded: ≈25ug

SDS Page: 10%

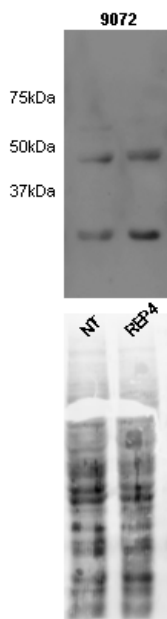
Transfer Condition: Trans-Blot Turbo Transfer System 25V, 10 min , Biorad

Transfer buffer 1X

Detection: Chemiluminescence

	Primary Antibody: <b>FANCG (14:28)</b> 9072	Secondary Antibody: <b>AffiniPure Goat Anti-Rabbit IgG (H+L)</b>
Source	Rabbit - FARF	Jackson ImmunoResearch
Concentration	0.44 mg/ml	0,8mg/mL
Dilution	1:1000	1:10000
Final Concentration	0.04 ug/ml	0,08ug/mL
Incubation Temp/Time	Over night 4°C	1 hour room temp.

### **Results:**



### **Interpretation:**

Antibody didn't recognize FANCG. Only something unspecific around ≈50kDa and 30kDa. Perhaps it will be better at a lower dilution, but the unspecific bands will have a higher signal.

**Last Updated:** August 2021