

FANCF (217:235) Antibody Data Sheet

HGNC: FA complementation group F

Animal: J9695, J9696

Type: Affinity Purified Rabbit Polyclonal

Antigen: 217:235

Peptide Sequence: RPQEELEPGIHKSPGEGSQC

Assay: N/A

Confirmed Species Cross-Reactivity: N/A

Supplier: NEP

Project Number: 4418

Individual Animal Serum/Unpurified Serum Available: YES

Storage: This antibody is stored in 50% Glycerol, .05% Azide, and 1% BSA and can be kept at 4°C or -20°C safely.

- Due to the presence of BSA in the buffer, non-BSA based blocking solutions may be helpful in limiting background signal.

Feedback Required:

All users are required to submit use-data. Please refer to the [FARM Antibodies page](#) for instructions on how to submit.

Citing FARM:

All users are required to cite FARM in publications. Please refer to the [FARM Publications page](#) for instructions on how to cite.

FANCF (217-235) antiserum Western test results

Submitter(s): Vrugt, H.J. van de (Henri) h.vandevrugt@amsterdamumc.nl, and Rockx, D.A.P. rockx@amsterdamumc.nl

Date: 9/2/2019

Experimental Set-Up:

Cell Line: 293T, Lymphoblastoid cell lines

Control(s):

Positive: 293T cell lysates, VU012_L (lymphoblastoid) cell lysates; transient and stable transfection of 293T, VU698L (FA-F) with plasmids expressing FANCF(-GFP) were included.

Negative: cell lysates from FANCF individuals (VU0698-L and VU0121-F)

Treatment: -

Protein: RIPA cell lysates

Western Blot Conditions:

Samples Loaded: Whole cell lysate (~40-60 ug/well)

SDS Page: 8-16% Mini-PROTEAN TGX™ gels (BIORAD)

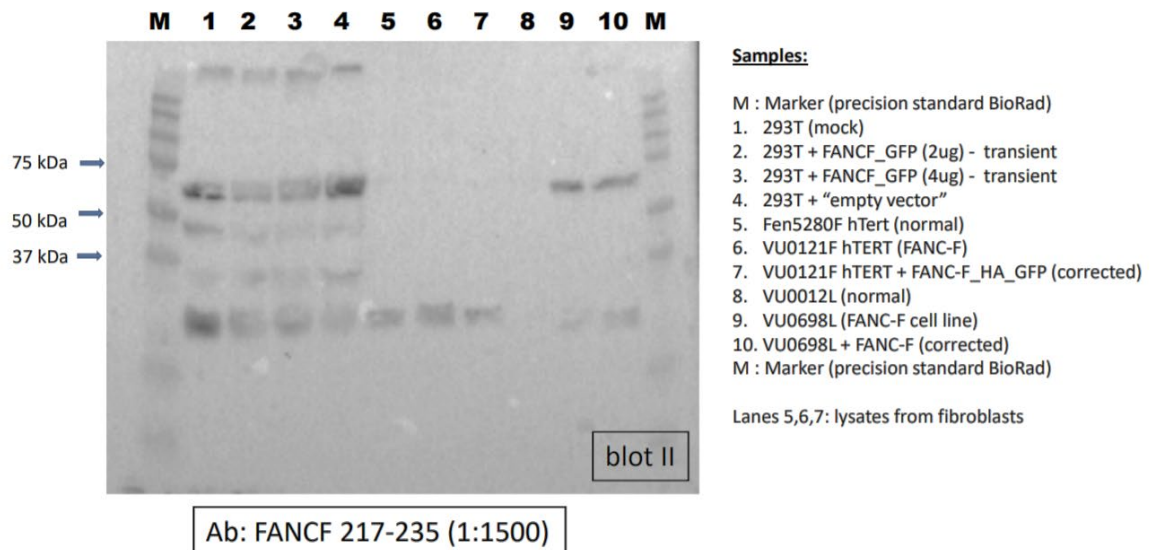
Transfer Condition: 2.5 hours @ 300mA

Detection: Chemiluminescence (ECL™ Prime; Amersham), via secondary (HRP conjugated)

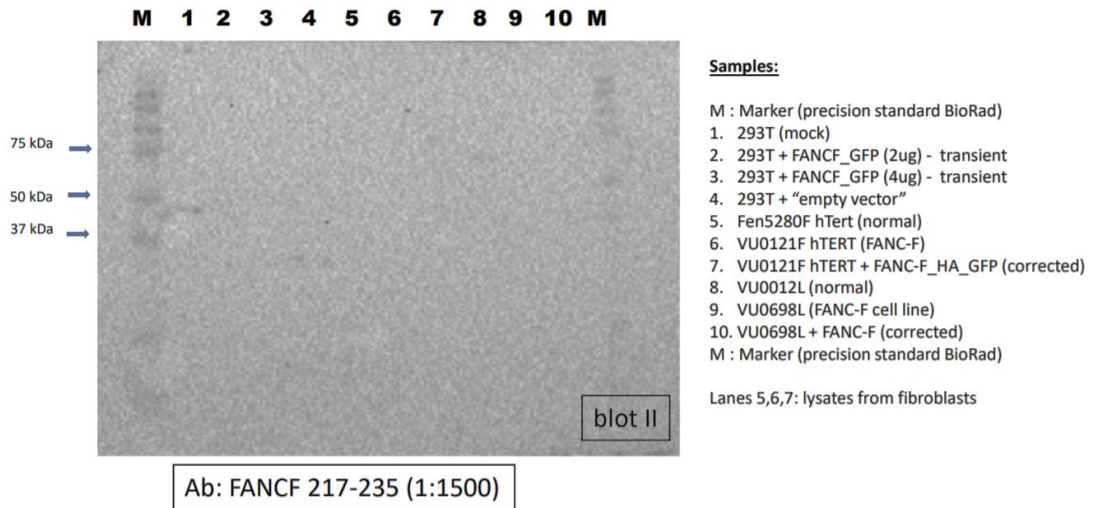
	Primary Antibody: NAME	Secondary Antibody: NAME
Source	FARF, FANCF (217-235)	Goat- α -Rabbit HRP (DAKO; P0448)
Concentration	0.221 mg/ml	-
Dilution	1:1500	1:5000
Final Concentration	0.15 μ g/ml	-
Incubation Temp/Time	ON @ 4°C	3-4 hours @ 4°

Results:

Anti-human FANCF Rabbit sera testing: full overview FANCF 217-235



Anti-human FANCF Rabbit sera testing: full overview FANCF 217-235



Interpretation:

We tested the FANCF 217-235 serum in transiently transfected 293 cells and lymphoblastoid cell lines, but we were unable to obtain a positive signal.

Positive results were obtained for FANCF (1:16) antibody