

FANCA (1412:1431) Antibody Data Sheet

HGNC: FA complementation group A

Antibody ID: A0401

Animal: R2500, R2501, R2502

Type: Affinity Purified Rabbit Polyclonal

Antigen: 1412:1431

Peptide Sequence: KKSFSHVAELLADRGDCDPE

Assay: WB

Confirmed Species Cross-Reactivity: Human

Supplier: Open Biosystems

Project Number: 0401

Individual Animal Serum/Unpurified Serum Available: YES

Notes:

- This antibody is stored in PBS should be kept at 4°C. Avoid freeze/thaws.
- This antibody was previously named "FANCA-1".
- All users are *required* to submit use-data. Please contact Leslie Wakefield (wakefiel@ohsu.edu) when you are ready to submit data (good or bad) and help the FA research community. Thank you in advance!
- If you publish research using antibodies from Fanconi Anemia Research Materials, please remember your obligation to cite. Here is the preferred way to do this:

"We thank Fanconi Anemia Research Materials, funded by Fanconi Anemia Research Fund through a partnership with Oregon Health & Science University, for providing the antibodies to enable the research reported here."

Last updated: September 2020

Experimental Set-Up:

Cell Line: FA-A fibroblasts (6914 pMMP-Empty, 6914 pMMP-FANCA)

Control(s): Deficient in FANCA (6914 + pMMP Empty)

Treatment: 200 nM Mitomycin C (MMC), 0.4 μM Aphidicolin (APH)

Protein: FANCA

Western Blot Conditions:

Samples Loaded: Whole cell lysates were prepared in 2% SDS lysis buffer and 10% beta mercaptoethanol. 30 μg of protein loaded.

SDS Page: 3-8% Tris-Acetate Gel (1.5mm x 10 well), Invitrogen

Transfer Condition: Semi-Dry Transfer; 25 V, 1 hour

Detection: Chemiluminescence (Clarity Western ECL Substrate)

	Primary Antibody: FANCA (1412:1431)	Secondary Antibody: ECL Anti-Rabbit IgG (NA934V)
Source	Rabbit	Anti-Rabbit IgG, Horseradish Peroxidase linked whole antibody (from donkey)
Concentration	-	-
Dilution	1:2000	1:5000
Final Concentration		
Incubation Temp/Time	overnight, 4°C	Room Temperature, 1 hour

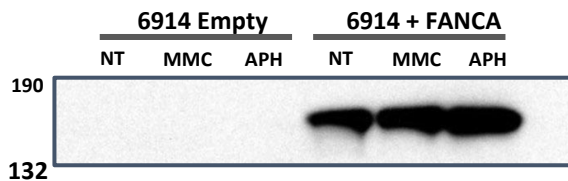
Results:

6914 Empty/ 6914 + FANCA

200 nM MMC 24hr

0.4 μM APH 24hr

Whole Cell Extracts



Interpretation:

Western Blot detection of FANCA in 6914 pMMP-FANCA whole cell lysates. Absent detection of FANCA in 6914 pMMP-EMPTY cells.

Experimental Set-Up:

Cell Line: FA-A fibroblasts (6914 pMMP-Empty, 6914 pMMP-FANCA)

Control(s): Deficient in FANCA (6914 + pMMP Empty)

Treatment: 100 nM Mitomycin C (MMC), 1.0 μ M Aphidicolin (APH), 40 J/m² UV

Protein: FANCA

Western Blot Conditions:

Samples Loaded: Whole cell lysates were prepared in 2% SDS lysis buffer and 10% beta mercaptoethanol. 30 μ g of protein loaded.

SDS Page: 3-8% Tris-Acetate Gel (1.5mm x 10 well), Invitrogen

Transfer Condition: Semi-Dry Transfer; 25 V, 1 hour

Detection: Chemiluminescence (Clarity Western ECL Substrate)

	Primary Antibody: FANCA (1412:1431)	Secondary Antibody: ECL Anti-Rabbit IgG (NA934V)
Source	Rabbit	Anti-Rabbit IgG, Horseradish Peroxidase linked whole antibody (from donkey)
Concentration	-	-
Dilution	1:2000	1:5000
Final Concentration		
Incubation Temp/Time	overnight, 4°C	Room Temperature, 1 hour

Results:

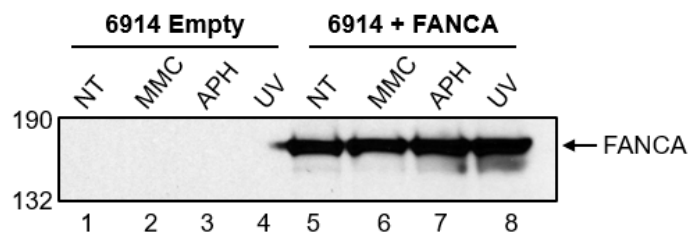
6914 Empty / 6914 + FANCA

100 nM MMC 24 h

1.0 μ M APH 24 h

40 J/m² UV 4 h

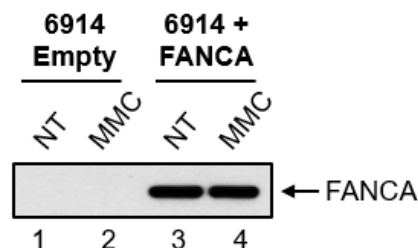
Whole Cell Extracts



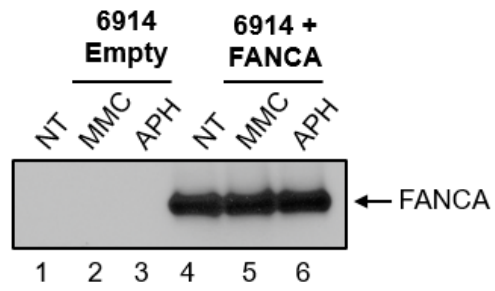
6914 Empty / 6914 + FANCA

100 nM MMC

Nuclear Extracts



6914 Empty / 6914 + FANCA
100 nM MMC 24 h
0.4 μ M APH 24 h
Whole Cell Extracts



Interpretation:

Western Blot detection of FANCA in 6914 pMMP-FANCA whole cell lysates. Absent detection of FANCA in 6914 pMMP-EMPTY cells.

Experimental Set-Up:

Cell Line: VU1131 FANCC and S91, VU1365 FANCA and S91

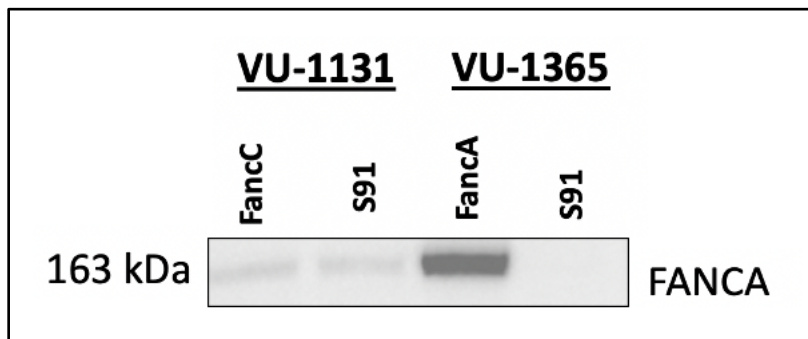
Western Blot Conditions:

Samples Loaded: Whole cell lysates were prepared and 30 µg of protein loaded

Detection: Chemiluminescence (Clarity Western ECL Substrate)

	Primary Antibody: FANCA (1412:1431)	Secondary Antibody:
Source	Rabbit	ECL Anti-Rabbit HRP Secondary
Concentration		
Dilution	1:1000	1:5000
Final Concentration		
Incubation Temp/Time	Overnight, 4°C	Room Temperature, 1 hour

Results:



Interpretation:

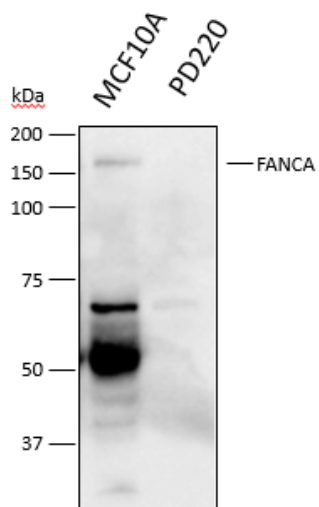
Western Blot detection of FANCA in FANCA proficient whole cell lysates. Absent detection of FANCA in FANCA deficient cells.

FANC protein: FANCA-1, N-Term

FANC antibody: R2500

Application: Western

Submitter/date: Antonia Nemece [Florida State University College of Medicine]/ 12.4.2017



Cells were lysed in boiling SDS lysis buffer. Lysates were resolved on 8% SDS-PAGE gel and transferred to PVDF membrane. FANCA antibody was added at a 1:2000 dilution in 5% milk and incubated overnight at 4°C.